

Proactive Performance Monitoring for Microsoft Hyper-V

“Quickly gain deeper insight into virtual environments”



“We selected Goliath Technologies for several reasons. The most important of which was that Goliath’s solutions provided a clear vision for proactive IT Operations and enabled us to quickly gain deeper insight into our virtual environments.”

Hunter McFadden
CEO, GreenQube

www.goliathtechnologies.com

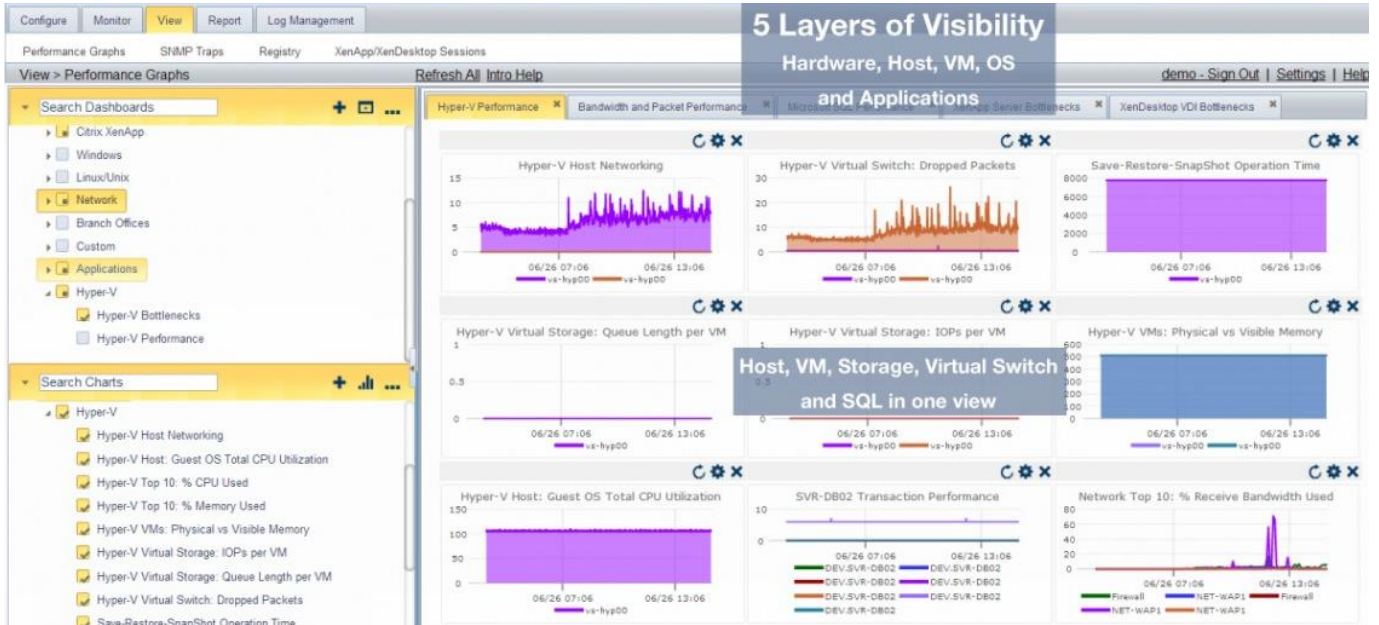


GOLIATH
TECHNOLOGIES

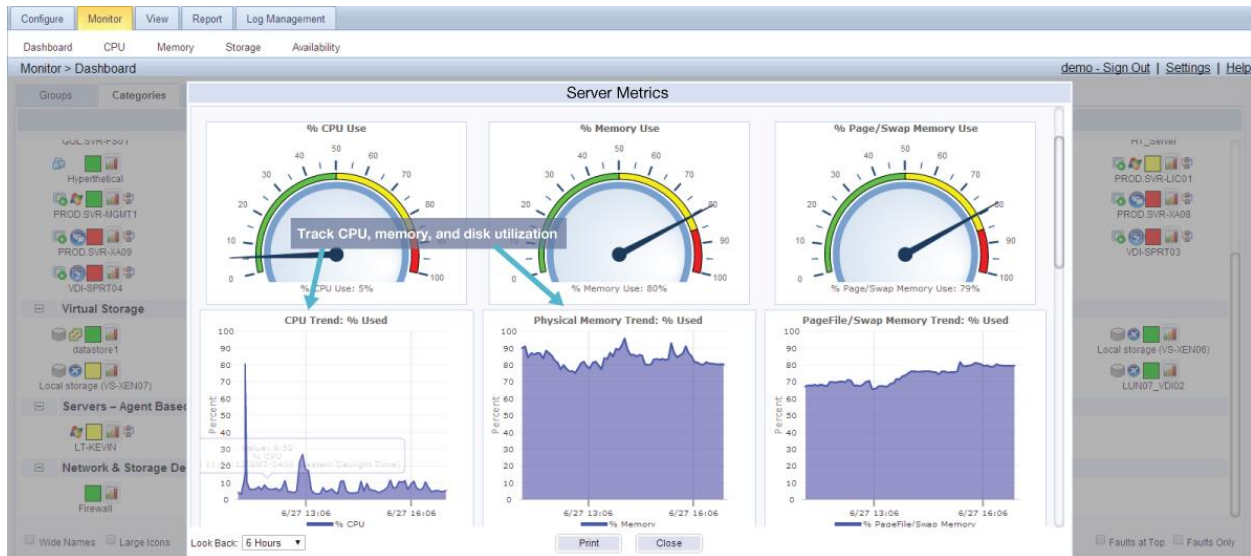
Proactive Performance Monitoring for Microsoft Hyper-V

With Goliath, you can improve application availability and eliminate blind spots and false positives, while reducing the complexity of your Microsoft Hyper-V virtual environment by using one product to monitor your Host, VM's, Application, OS, and Hardware.

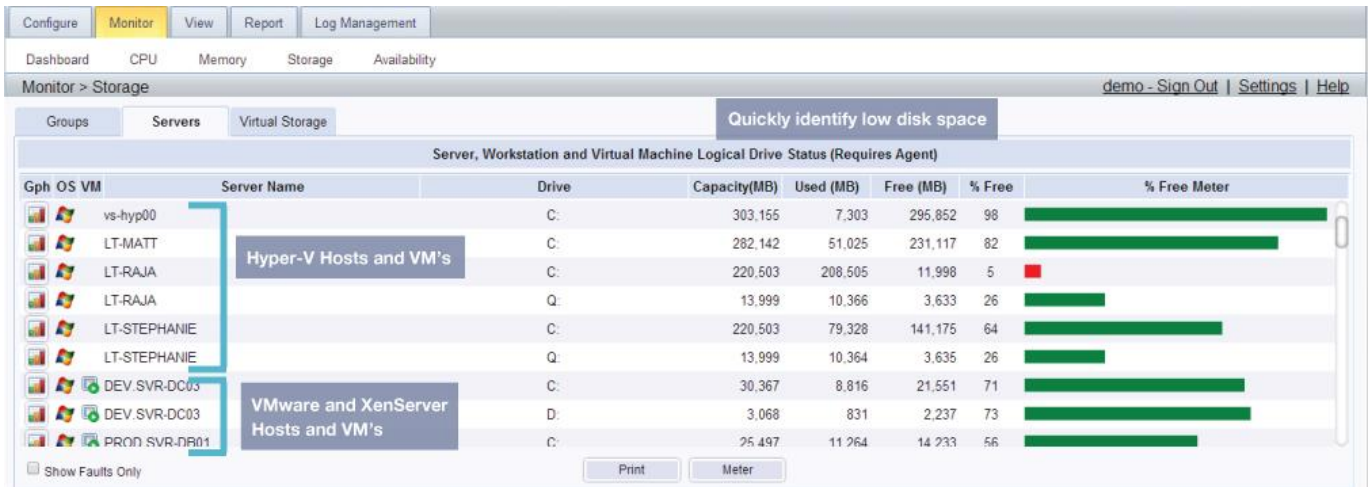
Five Layers of Visibility - Hardware, Hyper-V, VM, OS, and Applications



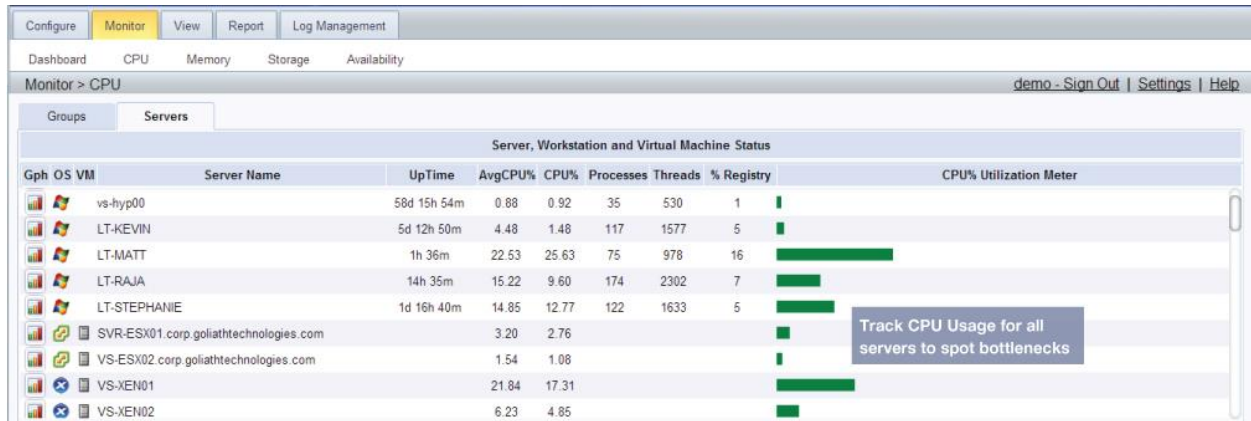
Correlate CPU and Memory Utilization



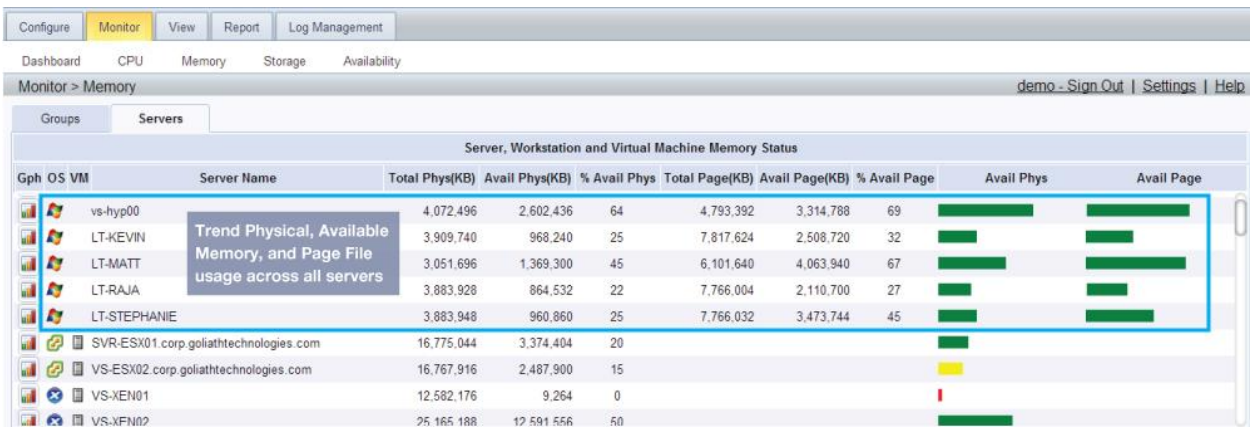
Quickly Identify Low Disk Space



Track CPU Usage for all Hosts and VMs at a Glance



Trend Memory Usage for all Hosts and VM's



Alert Resolution Feature to Ensure Consistent Remediation

Monitor IT®

Configure Monitor View Report Log Management

Setup Inventory Monitoring Rules Groups

Configure > Monitoring Rules

demo - Sign Out | Settings | Help

Specify Monitoring Rule Parameters and Properties

Alert Resolution Notes

Try deleting the certificate reg keys as a first step on the problem XenApp Session host:

- 1.Start Registry Editor.
- 2.Locate and then click the following registry subkey: HKEY_LOCAL_MACHINE\System\CurrentControlSet\Services\TermService\Parameters
- 3.Export a copy of the Parameters key and below (just in case)
- 4.Under this Parameters registry subkey, delete the following values: Certificate, X509 Certificate, X509 Certificate ID
- 5.Quit Registry Editor, and then restart the server.

Also, see if you have any other events that relate to TS licensing issues. It's possible that the grace period has expired and that this server has never successfully contacted the TS Licensing server.

You can manually specify a TSLs for testing to over-ride the TSLs discovery process:
<http://support.microsoft.com/Default.aspx?kbid=279561>

OK Cancel

Remediation instructions included with alerts to ensure consistency of fix actions and reduce resolution time

Set Notification Intervals and Escalation Conditions Eliminate Alert Storms

Monitor IT®

Configure Monitor View Report Log Management

Setup Inventory Monitoring Rules Groups

Configure > Monitoring Rules

demo - Sign Out | Settings | Help

Specify Monitoring Rule Parameters and Properties

Rule Name: EventLogWatch-

Description:

Severity: Caution

EventLogWatch Schedule Notifications Remediation Suspend Rule:

Uncheck 'Alert Every Time' and set the 'Minimal Notification Interval' to inhibit being alerted too frequently for the same condition from the same server/device. Click the 'question-mark' icon above-right for description of all these 'Schedule' options.

Alert Every Time:

Minimal Notification Interval: 15 Min(s)

When Any Single Event Occurs: 5 Times in 120 Seconds Combine All Events

Include Description Log Only When Criteria Match

Active Only if Server 'Owns'... ...This Cluster Group:

Set notification intervals and escalation conditions to eliminate alert storms

Real-Time Heat Map

Configure Monitor View Report Log Management

Dashboard CPU Memory Storage Availability

Monitor > Dashboard demo - Sign Out | Settings | Help

Groups Categories Status Alerts

Physical/Virtual Category Status

- Virtual Hosts
 - SVR-ESX01 corp.goliathtechnolo... VS-ESX02 corp.goliathtechnolog... VS-XEN01 VS-XEN02 VS-XEN03 VS-XEN04 VS-XEN05 VS-XEN06
- Virtual Machines - Host Based
 - DEV SVR-DB02 DEV SVR-DB03 DEV SVR-DC03 DEV SVR-MGMT2 DEV SVR-PVS00 DEV SVR-SC0M01 GOL SVR-AS02 GOL SVR-DC01
 - GOL SVR-FS01 GOL SVR-INST01 GOL SVR-TS02 GOL SVR-XA01 HT_Collector HT_Complete HT_Database HT_Server
 - Hyperthetical PROD NET-VPX01 PROD NET-VPX02 PROD SVR-D601 PROD SVR-D602 PROD SVR-D603 PROD SVR-DDC01 PROD SVR-DDC02
 - PROD SVR-MGMT1 PROD SVR-MIT01 PROD SVR-SF01 PROD SVR-XA02 PROD SVR-XA03 PROD SVR-XA05 PROD SVR-XA06 PROD SVR-XA08 PROD SVR-XA09
 - PROD SVR-MIT03 QA SVR-MIT04 QA SVR-MIT05 VDI-SPRT01 VDI-SPRT02 VDI-SPRT03 VDI-SPRT04 VDI-SPRT05 VS-STOR1 vSphere Data Protection 5.5
- Virtual Storage
 - datastore1 ESX02_DS01 Local storage (VS-XEN01) Local storage (VS-XEN02) Local storage (VS-XEN03) Local storage (VS-XEN04) Local storage (VS-XEN05) Local storage (VS-XEN06)
 - Local storage (VS-XEN07) LUN01_VM01 LUN02_VM02 LUN03_VM03 LUN04_VM04 LUN05_VM05 LUN06_VDI01 LUN07_VDI02
- Servers - Agent Based Physical & Virtual
 - LT-KEVIN LT-MATT LT-RAJA LT-STEPHANIE vs-rip00
- Network & Storage Devices
 - Firewall NET-SW01 NET-WAP1 WindowsRT

Wide Names Large Icons Expand All Collapse All

Faults at Top Faults Only

Real-time heat map provides quick visibility into the performance of your network devices and your virtual and physical infrastructure, all in one view.