

Proactive Physical Infrastructure Performance Monitoring

“Functionality that covers both physical and virtual environments”



“We used Goliath’s product in a small virtual server environment, but decided to expand their footprint and replace the legacy product. They now monitor the entire IT infrastructure both physical and virtual environments. As a service provider, we offer remote monitoring services and use Goliath’s remote site management capability as well.”

Angie Gleim

VP, Business Operations, Perpetual Technologies, Inc.

www.goliathtechnologies.com

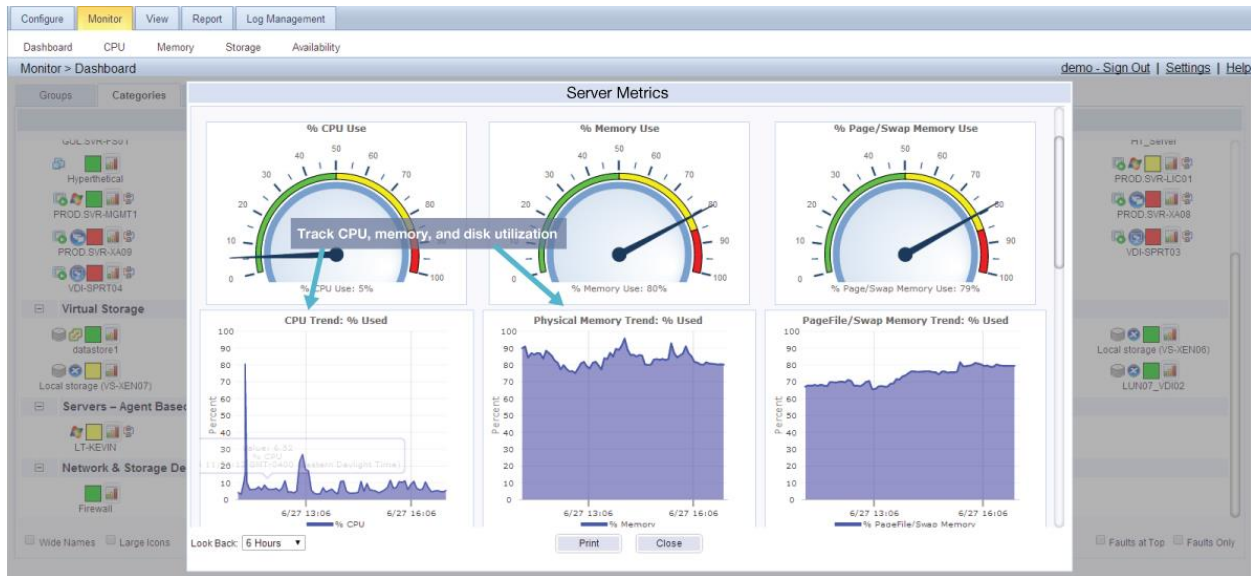


GOLIATH
TECHNOLOGIES

Proactive Physical Infrastructure Performance Monitoring

With Goliath you can consolidate your IT monitoring tools and monitor your entire Virtual and Physical Infrastructure from a single console by seamlessly integrating metrics from your entire infrastructure. From that one location, you can correlate the performance of multiple IT elements including physical servers, virtual servers, network elements, applications, and virtual desktops either on premise or in the cloud. Our reports and dashboards work across multiple platforms for your entire infrastructure and we have application modules that can help you monitor specific applications.

Track CPU, Memory, and Disk Utilization



Track SQL, CPU, Memory Usage, Database Transaction Length, and Network Usage



Trend network interfaces with highest usage and device network latency



Track CPU usage for all servers to spot bottlenecks

Monitor > CPU

Server, Workstation and Virtual Machine Status								CPUs Utilization Meter
Gph OS VM	Server Name	UpTime	AvgCPU%	CPU%	Processes	Threads	% Registry	
vs-hyp00		58d 15h 54m	0.88	0.92	35	530	1	<div style="width: 10%;"></div>
LT-KEVIN		5d 12h 50m	4.48	1.48	117	1577	5	<div style="width: 10%;"></div>
LT-MATT		1h 36m	22.53	25.63	75	978	16	<div style="width: 20%;"></div>
LT-RAJA		14h 35m	15.22	9.60	174	2302	7	<div style="width: 15%;"></div>
LT-STEPHANIE		1d 16h 40m	14.85	12.77	122	1633	5	<div style="width: 15%;"></div>
SVR-ESX01.corp.goliathtechnologies.com			3.20	2.76				<div style="width: 10%;"></div>
VS-ESX02.corp.goliathtechnologies.com			1.54	1.08				<div style="width: 10%;"></div>
VS-XEN01			21.84	17.31				<div style="width: 20%;"></div>
VS-XEN02			6.23	4.85				<div style="width: 10%;"></div>

Track CPU Usage for all servers to spot bottlenecks

Trend Physical, Available Memory, and Page File usage across all servers

Monitor > Memory

Server, Workstation and Virtual Machine Memory Status									
Gph OS VM	Server Name	Total Phys(KB)	Avail Phys(KB)	% Avail Phys	Total Page(KB)	Avail Page(KB)	% Avail Page	Avail Phys	Avail Page
vs-hyp00		4,072,496	2,602,436	64	4,793,392	3,314,788	69	<div style="width: 64%;"></div>	<div style="width: 69%;"></div>
LT-KEVIN		3,909,740	968,240	25	7,817,624	2,508,720	32	<div style="width: 25%;"></div>	<div style="width: 32%;"></div>
LT-MATT		3,051,696	1,369,300	45	6,101,640	4,063,940	67	<div style="width: 45%;"></div>	<div style="width: 67%;"></div>
LT-RAJA		3,883,928	864,532	22	7,766,004	2,110,700	27	<div style="width: 22%;"></div>	<div style="width: 27%;"></div>
LT-STEPHANIE		3,883,948	960,860	25	7,766,032	3,473,744	45	<div style="width: 25%;"></div>	<div style="width: 45%;"></div>
SVR-ESX01.corp.goliathtechnologies.com		16,775,044	3,374,404	20				<div style="width: 20%;"></div>	
VS-ESX02.corp.goliathtechnologies.com		16,767,916	2,487,900	15				<div style="width: 15%;"></div>	
VS-XEN01		12,582,176	9,264	0				<div style="width: 0%;"></div>	
VS-XFN02		25,165,188	12,591,556	50				<div style="width: 50%;"></div>	

Trend Physical, Available Memory, and Page File usage across all servers

Alert Resolution Feature to Ensure Consistent Remediation

Specify Monitoring Rule Parameters and Properties

Alert Resolution Notes

A program, the Clsid displayed in the message, tried to start the DCOM server by using the DCOM infrastructure. Based on the security ID (SID), this user does not have the necessary permissions to start the DCOM server.

RESOLUTION
Verify that the user has the appropriate permissions to start the DCOM server.

To assign permissions:

1. Using Regedit, navigate to the following registry value
HKCR\Clsid\clsid value\localserver32
The clsid value is the information displayed in the message.
2. In the right pane, double-click Default. The Edit String dialog box is displayed. Leave this dialog box open.
3. Click Start, and then click Control Panel.
4. Double-click Administrative Tools, and then double-click

Save remediation instructions in Alert Resolution feature

Include remediation instructions with alerts to ensure consistency of fix actions and reduce resolution time

Set Notification Intervals and Escalation Conditions Eliminate Alert Storms

Specify Monitoring Rule Parameters and Properties

Rule Name: Group Policy Failure - Folder Policy Exception

Description: Client side extension caught the unhandled exception

Severity: High

Schedule

Alert Every Time:

Minimal Notification Interval: 15 Min(s)

When Any Single Event Occurs: 5 Times in 120 Seconds Combine All Events

Include Description Log Only When Criteria Match

Active Only if Server 'Owns'... ..This Cluster Group:

Set notification intervals and escalation conditions to eliminate alert storms

Out-of-the-Box Monitoring Rules for SQL, Exchange, SharePoint, IIS, MySQL, and More

Monitor **IT**[®]

Configure Monitor View Report Log Management

Setup Inventory Monitoring Rules Groups

Configure > Monitoring Rules

Rule Name	Type	Severity	Description
EventLogWatch-LOD Data from User Profile Log	EventLogWatch	Caution	
EventLogWatch-MSEExchange-Cluster Errors	EventLogWatch	Severe	Monitor for All MSEExchange Cluster Source Application Errors
EventLogWatch-MSEExchange-EDB Corruption	EventLogWatch	Caution	Monitor for MSEExchange EDB Corruption Application Event
EventLogWatch-MSEExchange-EXPROX	EventLogWatch	High	Monitor for EXPROX Application Errors
EventLogWatch-MSEExchange-ExSMTP	EventLogWatch	High	Monitor for ExSMTP Application Events
EventLogWatch-MSEExchange-Message Store Exceeded Size	EventLogWatch	Critical	Monitor for MSEExchange Message Stores for Exceeding Size
EventLogWatch-MSEExchange-MSADC	EventLogWatch	High	Monitor for MSADC Application Events
EventLogWatch-MSEExchange-MSEExchangeAdmin	EventLogWatch	High	Monitor for MSEExchangeAdmin Application Events
EventLogWatch-MSEExchange-MSEExchangeDSAccess	EventLogWatch	High	Monitor for MSEExchangeDSAccess Application Events
EventLogWatch-MSEExchange-MSEExchangeES	EventLogWatch	High	Monitor for MSEExchangeES Application Event
EventLogWatch-MSEExchange-MSEExchangeFBPublish	EventLogWatch	High	Monitor for MSEExchangeFBPublish Application Events
EventLogWatch-MSEExchange-MSEExchangeIM	EventLogWatch	High	Monitor for MSEExchangeIM Application Events
EventLogWatch-MSEExchange-MSEExchangeIM-Non-Critical	EventLogWatch	Caution	Monitor for Non-Critical MSEExchangeIM Application Events
EventLogWatch-MSEExchange-MSEExchangeIS	EventLogWatch	High	Monitor for MSEExchangeIS Application Events
EventLogWatch-MSEExchange-MSEExchangeSA	EventLogWatch	High	Monitor for MSEExchangeSA Application Event
EventLogWatch-MSEExchange-MSEExchangeSA-NonCritical	EventLogWatch	Caution	Monitor for Non-Critical MSEExchangeSA Application Events
EventLogWatch-MSEExchange-MSEExchangeSRS	EventLogWatch	High	Monitor for MSEExchangeSRS Application Events
EventLogWatch-MSEExchange-MSEExchangeSRS-Non-Critical	EventLogWatch	Caution	Monitor for Non-Critical MSEExchangeSRS Application Events
EventLogWatch-MSEExchange-MSIMAP4SVC	EventLogWatch	Caution	Monitor for IMAP4SVC Application Events
EventLogWatch-MSEExchange-MSPOP3SVC	EventLogWatch	High	Monitor for POP3SVC Application Events
EventLogWatch-MSEExchange-MSPOP3SVC-Non-Critical	EventLogWatch	Caution	Monitor for Non-Critical POP3SVC Application Events
EventLogWatch-MSSQL-MSDTC	EventLogWatch	Critical	Monitor MSDTC Application Error Events
EventLogWatch-MSSQL-MSSQL	EventLogWatch	Critical	Monitor MSSQL Application Error Events
EventLogWatch-MSSQL-SQLAgent	EventLogWatch	Critical	Monitor MSSQLAgent Application Error Events
EventLogWatch-MSSQL-SQLCTR70	EventLogWatch	Critical	Monitor SQLCTR70 Application Error Events
EventLogWatch-MSSQL-SQLServerAgent	EventLogWatch	Critical	Monitor SQLServerAgent Application Error Events
EventLogWatch-MSSQLSERVER Errors	EventLogWatch	Severe	Monitor MSSQLSERVER Application Error Events
EventLogWatch-Session Interruption	EventLogWatch	Caution	Alert on Session Interruption
EventLogWatch-Session interruption	EventLogWatch	Caution	XD Session interruption
Excessive CPU Use by Application or Process	ProcessWatch	Caution	Monitor Running Processes for Any that Exceed CPU Use of 50 Percent
FileWatch- Heather Test	FileWatch	Caution	

Exchange

SQL

Out-of-the-Box monitoring rules for SQL, Exchange, SharePoint, IIS, MySQL, and more

Edit View Assigned Duplicate Delete

New Import/Export Rules Rules Report Print